

## GROUND FLOOR

### PLOTS 1 & 3

KITCHEN / DINING ROOM  
5.36m X 3.38m (17'7" X 11'1")

LIVING ROOM  
4.6m max X 3.8m (15'1" max X 12'5")

GROUND FLOOR AREA PLOTS 1 & 3:  
49.96sq.m / 535.5sq.ft

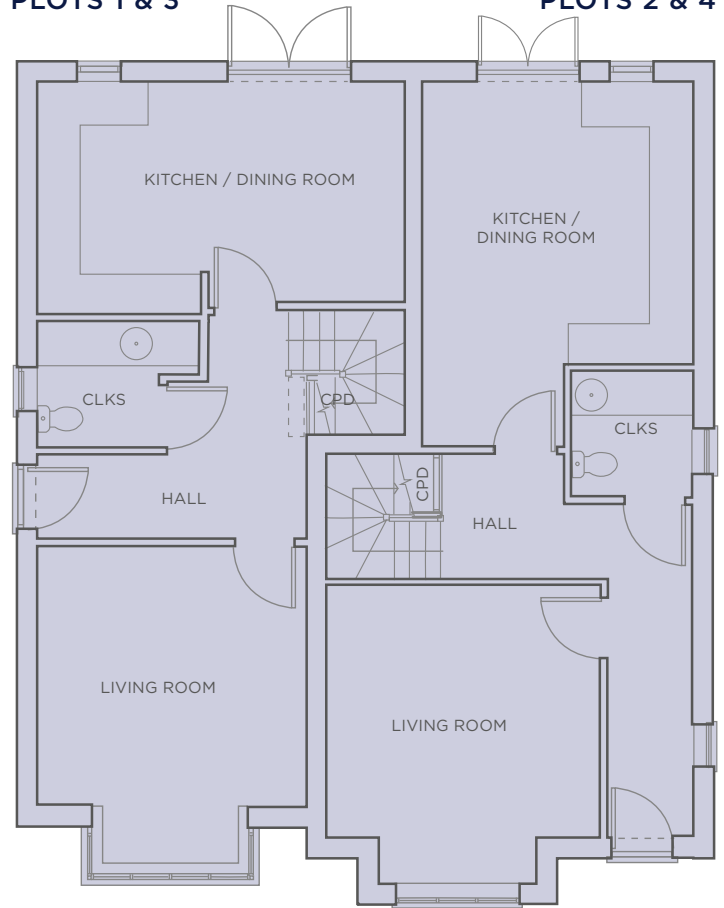
### PLOTS 2 & 4

KITCHEN / DINING ROOM  
5.3m max X 3.96m (17'5" max X 13')

LIVING ROOM  
4.3m max X 4m (14'1" max X 13'1")

GROUND FLOOR AREA PLOTS 2 & 4:  
52.63sq.m / 566.5sq.ft

PLOTS 1 & 3



PLOTS 2 & 4

## FIRST FLOOR

### PLOTS 1 & 3

MASTER BEDROOM  
4.5m max X 3.92m (14'9" max X 12,10")

BEDROOM 2  
3.23m X 2.62m (10'7" X 8'7")

BEDROOM 3  
3.23m X 2.62m (10'7" X 8'7")

FIRST FLOOR AREA PLOTS 1 & 3:  
48.57sq.m / 522.8sq.ft

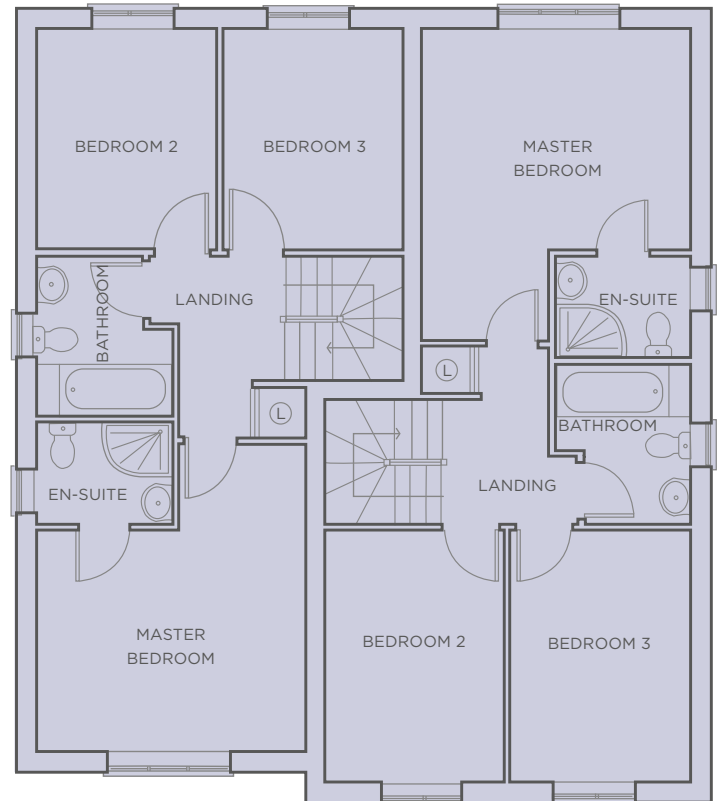
### PLOTS 2 & 4

MASTER BEDROOM  
4.5m max X 3.92m (14'9" max X 12'10")

BEDROOM 2  
3.68m X 2.62m (12'1" X 8'7")

BEDROOM 3  
3.68m X 2.62m (12'1" X 8'7")

FIRST FLOOR AREA PLOTS 2 & 4:  
51.13sq.m / 550.4sq.ft



PLOTS 1 & 3

PLOTS 2 & 4

TOTAL FLOOR AREA PLOTS 1 & 3: 98.53sq.m / 1058.3sq.ft

TOTAL FLOOR AREA PLOTS 2 & 4: 103.76sq.m / 1116.9sq.ft